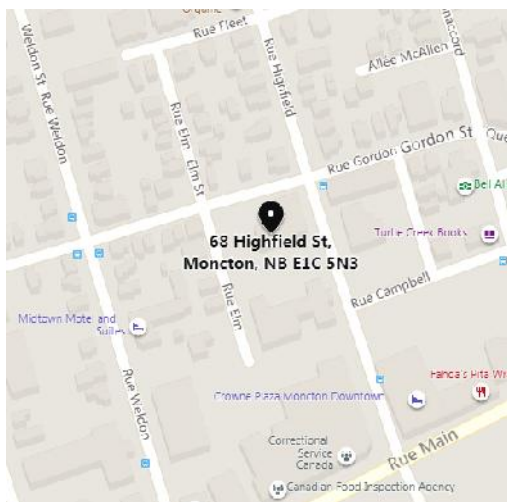
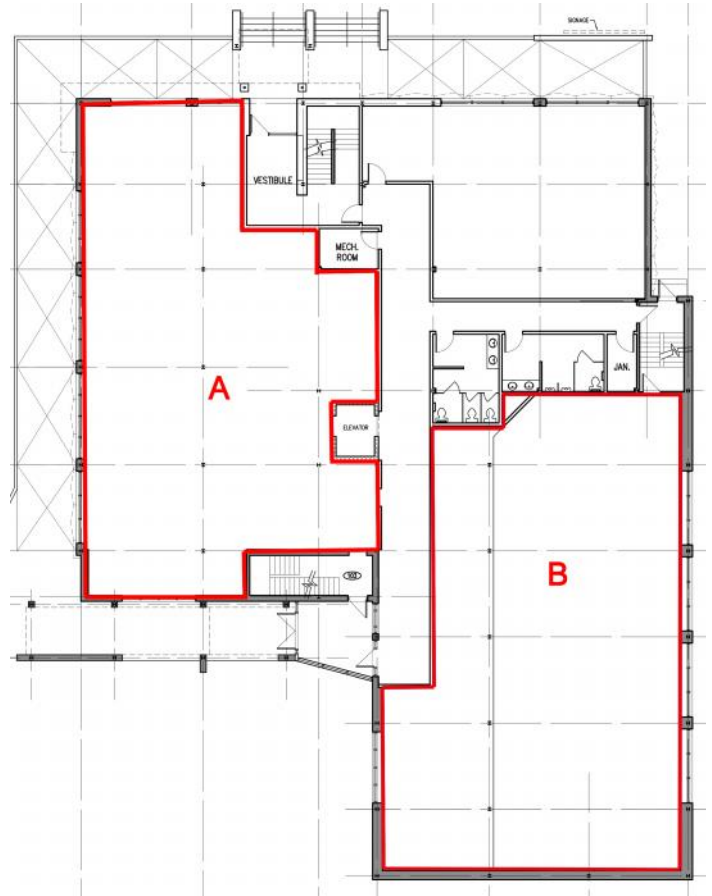




68 Highfield St., Moncton, New Brunswick (Old YMCA Building)

- Multi-tenant office building
- Corner of Gordon & Highfield Streets
- Free parking on and off site
- Available Space:
 - A- 3,851 sq. ft. approx.
 - B- 4,582 sq. ft. approx.
- Centrally Located
- On bus route with stop directly outside the building



Contact
Patrick Gillespie
506-866-0084

pgillespie@theashfordgroup.com

OR

Contact
Ryan Gillespie
506-874-5832

rgillespie@theashfordgroup.com